

**Sona College of Technology, Salem**  
**(An Autonomous Institution)**  
**Student Admissions Report (AY 2018-19)**

The annual admission report for the academic year 2018-19, offering a comprehensive overview of the admission statistics for our BE/B.Tech and ME/M.Tech engineering programmes, MBA and MCA are presented below. Our admission outcomes align successfully with AICTE approval and the Tamil Nadu Government reservation policy [Open Competition (OC) at 31%, Backward Class (BC) at 26.5%, Backward Class Muslim (BCM) at 3.5%, Most Backward Class (MBC) at 20%, Scheduled Caste (SC) at 15%, Scheduled Caste Arunthathiyars (SCA) at 3%, and Scheduled Tribes (ST) at 1%], maintaining a balance that meets the mandated reservation for various categories. The detailed breakdown of students admitted to each programme within different categories is provided in the table below.

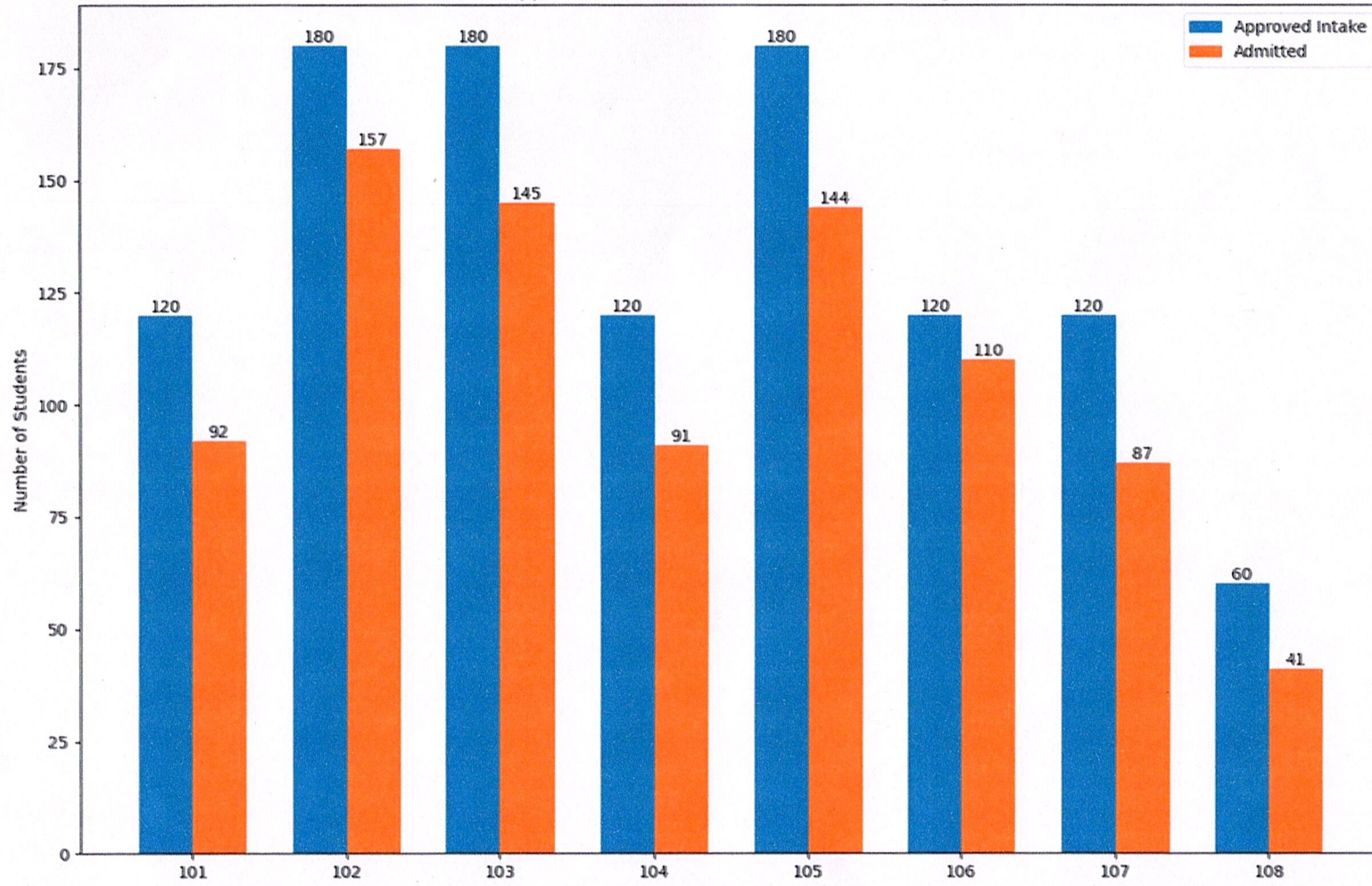
S.No	Code	Programme Name	Sanctioned Intake	Students Admitted	Student Admission Categories							
					OC	BC	BCM	MBC	SC	SCA	ST	Others
1	101	B.E. - Civil Engineering	120	92	0	38	2	33	10	1	0	8
2	102	B.E. - Computer Science and Engineering	180	157	13	79	5	46	7	1	0	6
3	103	B.E. - Electronics and Communication Engineering	180	145	8	76	5	40	15	0	1	0
4	104	B.E. - Electrical and Electronics Engineering	120	91	0	46	1	30	12	0	1	1
5	105	B.E. - Mechanical Engineering	180	144	10	64	3	53	9	3	1	1
6	106	B.Tech. - Information Technology	120	110	10	62	4	29	5	0	0	0
7	107	B.Tech. - Fashion Technology	120	87	9	49	3	21	4	1	0	0
8	108	B.E. - Mechatronics Engineering	60	41	1	25	2	13	0	0	0	0
9	201	M.E. - Computer Science and Engineering	18	6	1	3	0	2	0	0	0	0
10	202	M.E. - Communication System	18	4	1	1	0	1	0	0	0	1
11	203	M.E. - Engineering Design	18	9	0	3	0	4	1	1	0	0
12	204	M.E. - Product Design and Development	18	0	0	0	0	0	0	0	0	0
13	205	M.E. - Power Electronics and Drives	18	4	0	2	0	2	0	0	0	0



S.No	Code	Programme Name	Sanctioned Intake	Students Admitted	Student Admission Categories							
					OC	BC	BCM	MBC	SC	SCA	ST	Others
14	206	M.E. - Power Systems Engineering	18	14	1	7	0	3	2	0	0	1
15	207	M.E. - Software Engineering	18	0	0	0	0	0	0	0	0	0
16	208	M.E. - VLSI Design	18	3	1	1	0	0	1	0	0	0
17	209	M.E. - Structural Engineering	24	21	2	9	1	3	3	0	0	3
18	210	M.Tech. - Information Technology	18	4	1	1	0	2	0	0	0	0
19	211	M.E. - Construction Engineering and Management	24	23	1	13	0	5	3	0	0	1
20	212	M.E. - Industrial Safety and Engineering	24	16	2	7	0	6	1	0	0	0
21	301	MBA - Masters in Business Administration	180	179	18	88	3	53	16	0	0	1
22	401	MCA - Masters in Computer Applications	60	47	3	23	0	20	1	0	0	0
		<b>Total</b>	<b>1554</b>	<b>1197</b>	<b>82</b>	<b>597</b>	<b>29</b>	<b>366</b>	<b>90</b>	<b>7</b>	<b>3</b>	<b>23</b>

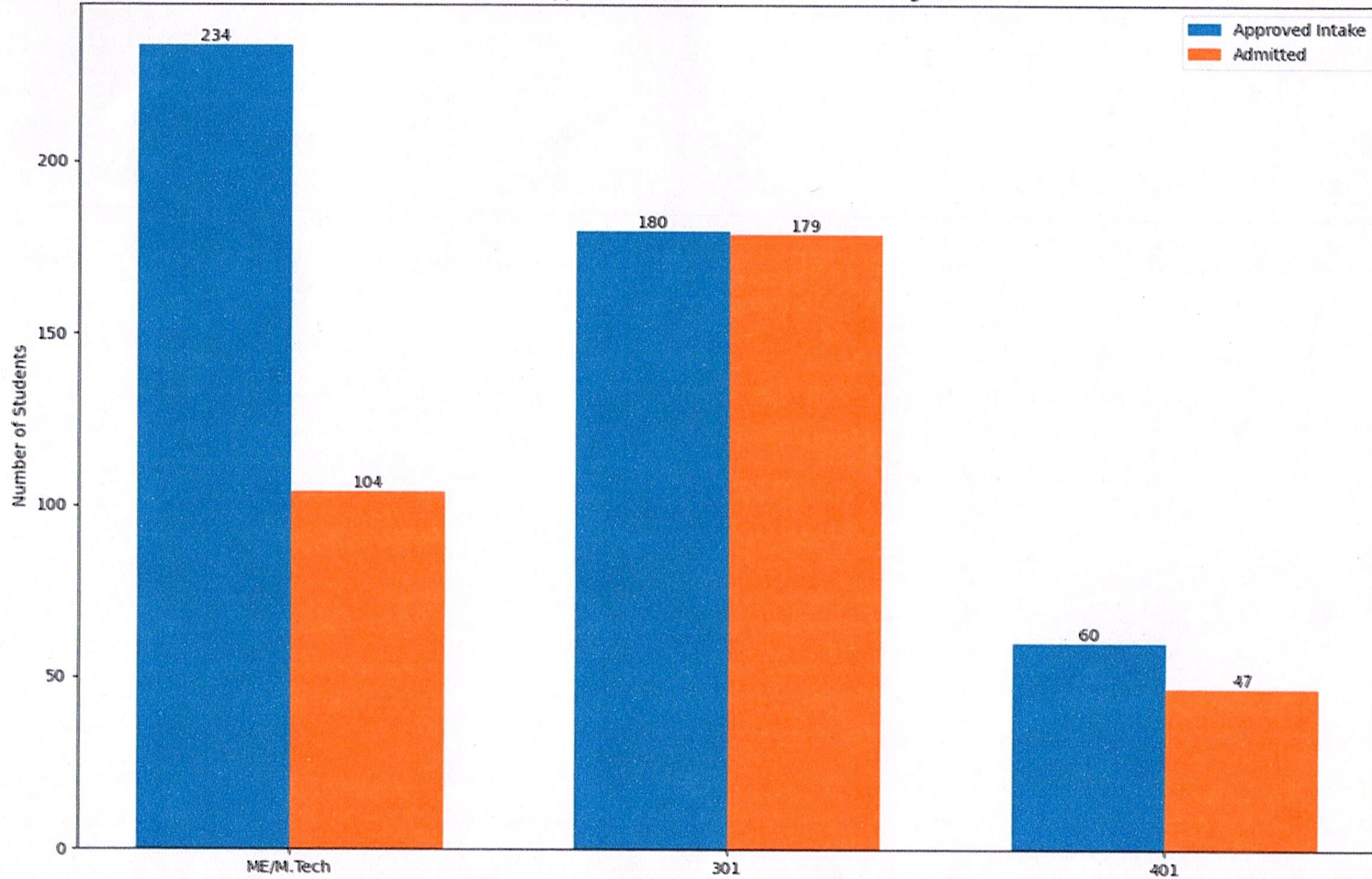


Intake Approval versus Enrollment for BE/BTech Programme





Intake Approval versus Enrollment for PG Programme



Director Admission  
Dr. Kadhar Nawazz

Principal  
Dr. S.R.R Senthilkumar  
PRINCIPAL  
SONA COLLEGE OF TECHNOLOGY,  
(Autonomous)  
SALEM - 636 005,